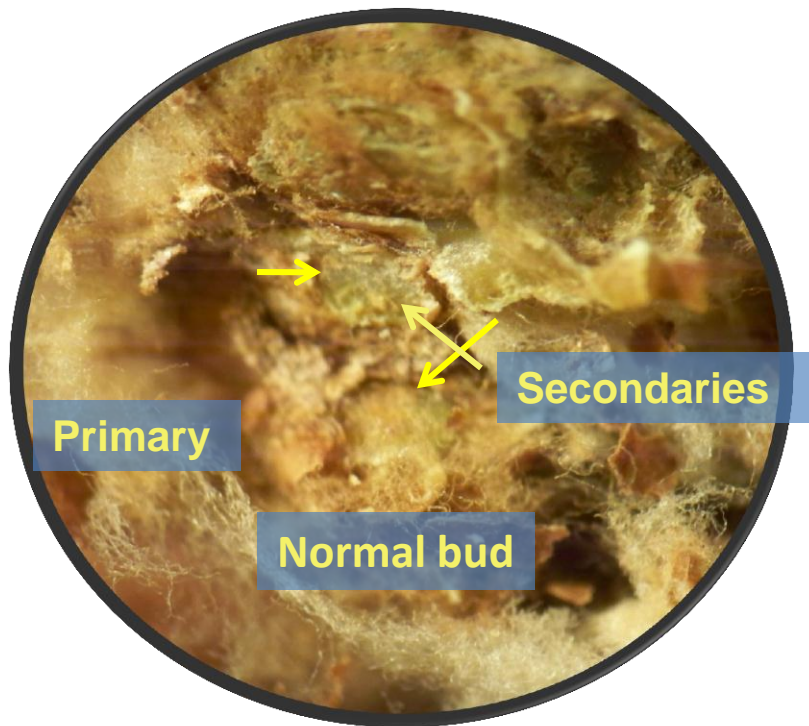


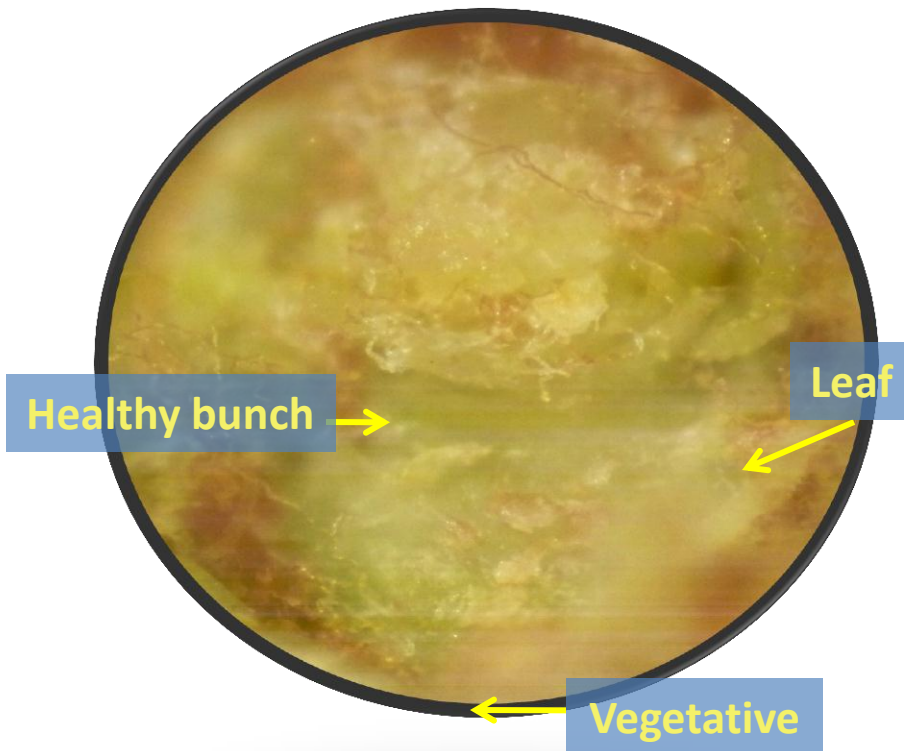
Thompson Seedless Normal Healthy Bud



Normally the Thompson Seedless buds have one primary and two secondary bud positions. Most of the secondary positions are vegetative.

Thompson Seedless

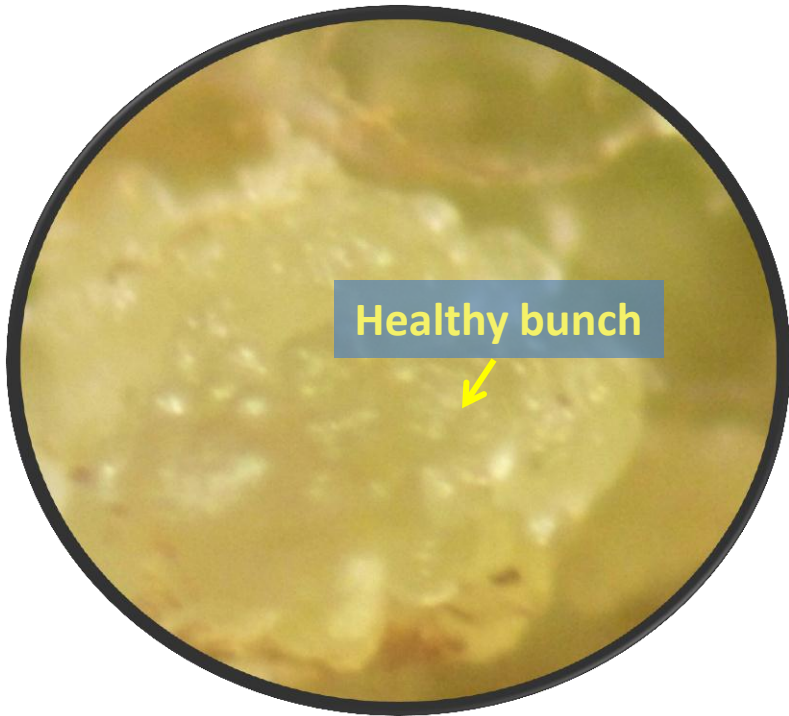
Healthy Bud with Single Bunch



Here is a close-up of a healthy Thompson Seedless bud, showing the “bunch” primordium, or inflorescence, and the vegetative tip that will grow into a cane.

Thompson Seedless

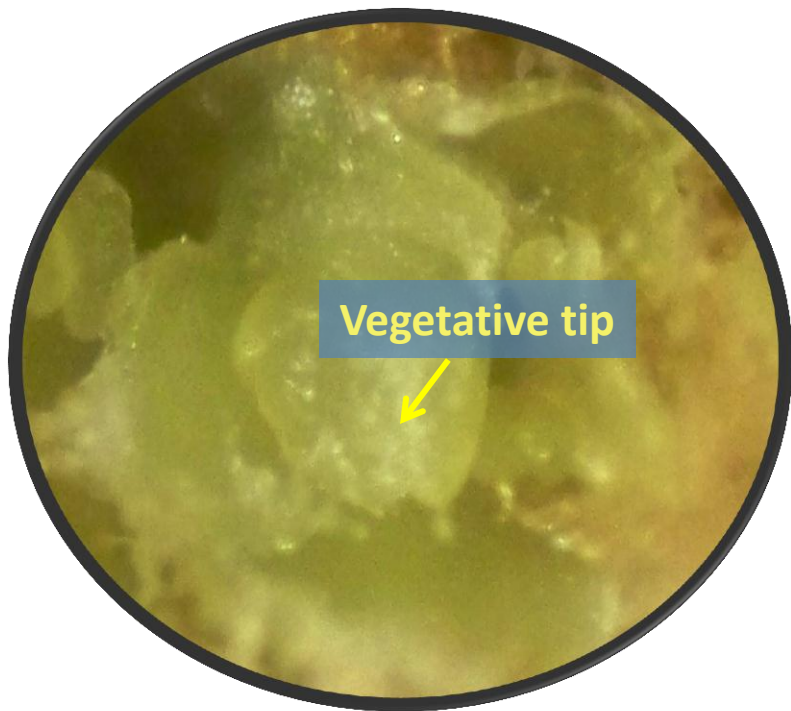
Healthy bunch



A close-up of just the bunch.

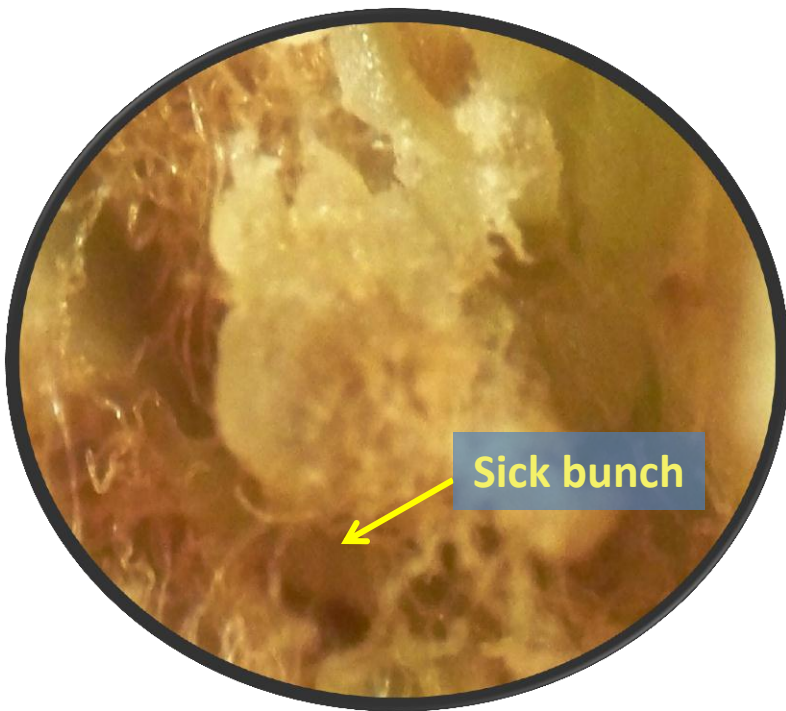
Thompson Seedless

Zero Bunches



A close up of a vegetative tip in a bud with no bunch, rated "0".

Thompson Seedless Sick Bunch



**Close-up of a Sick
Thompson Seedless
bunch. The sick spot
grows until the entire
bud is dead.**

Thompson Seedless

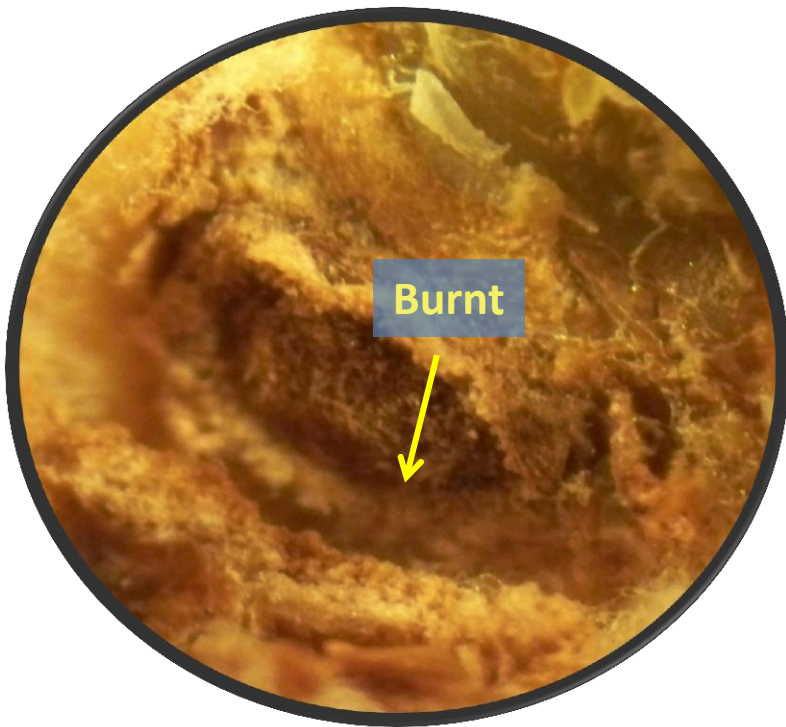
Dead



When most of the bunch is sick, we rate it as "Dead".

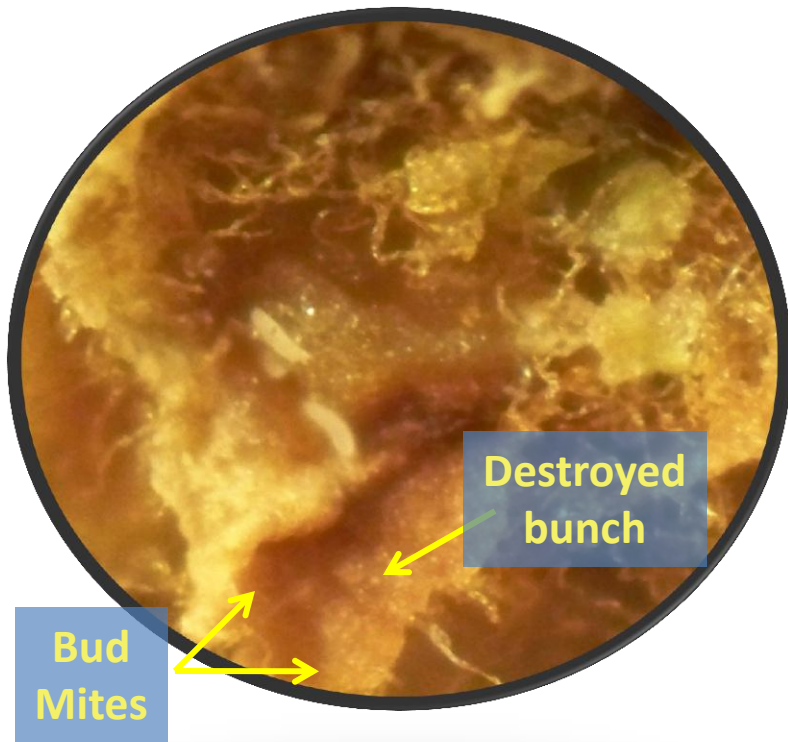
Thompson Seedless

Burnt



A “Burnt” bud results from necrosis at an abscission layer, usually after bloom. It is different from the “Sick-Dead” injury process.

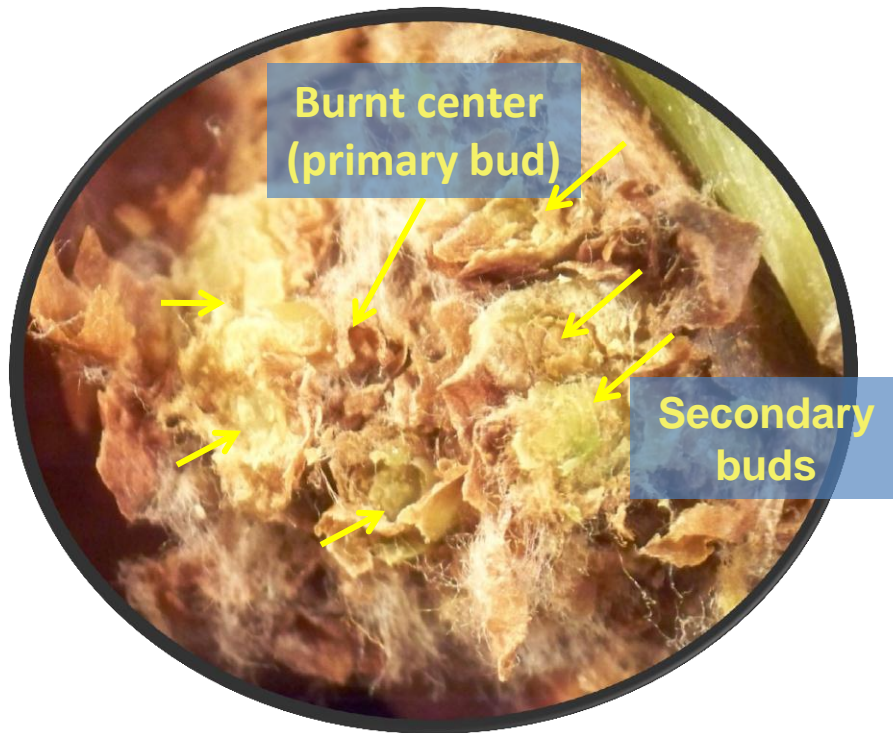
Thompson Seedless Bud Mite Feeding Damage



A close-up of a Thompson Seedless bunch with bubbly damage by bud mites. Two mites are visible feeding on the bunch. The mites also cause the darkening on the outer tissues. This entire bud will likely die.

Thompson Seedles

Possible Gibberellin Toxicity



Abnormal amount of secondary bud positions with a burnt primary in the center. Most of the secondary positions were vegetative with excessive amounts of bud mites. The occasional bunch was often injured or destroyed by the mites.